

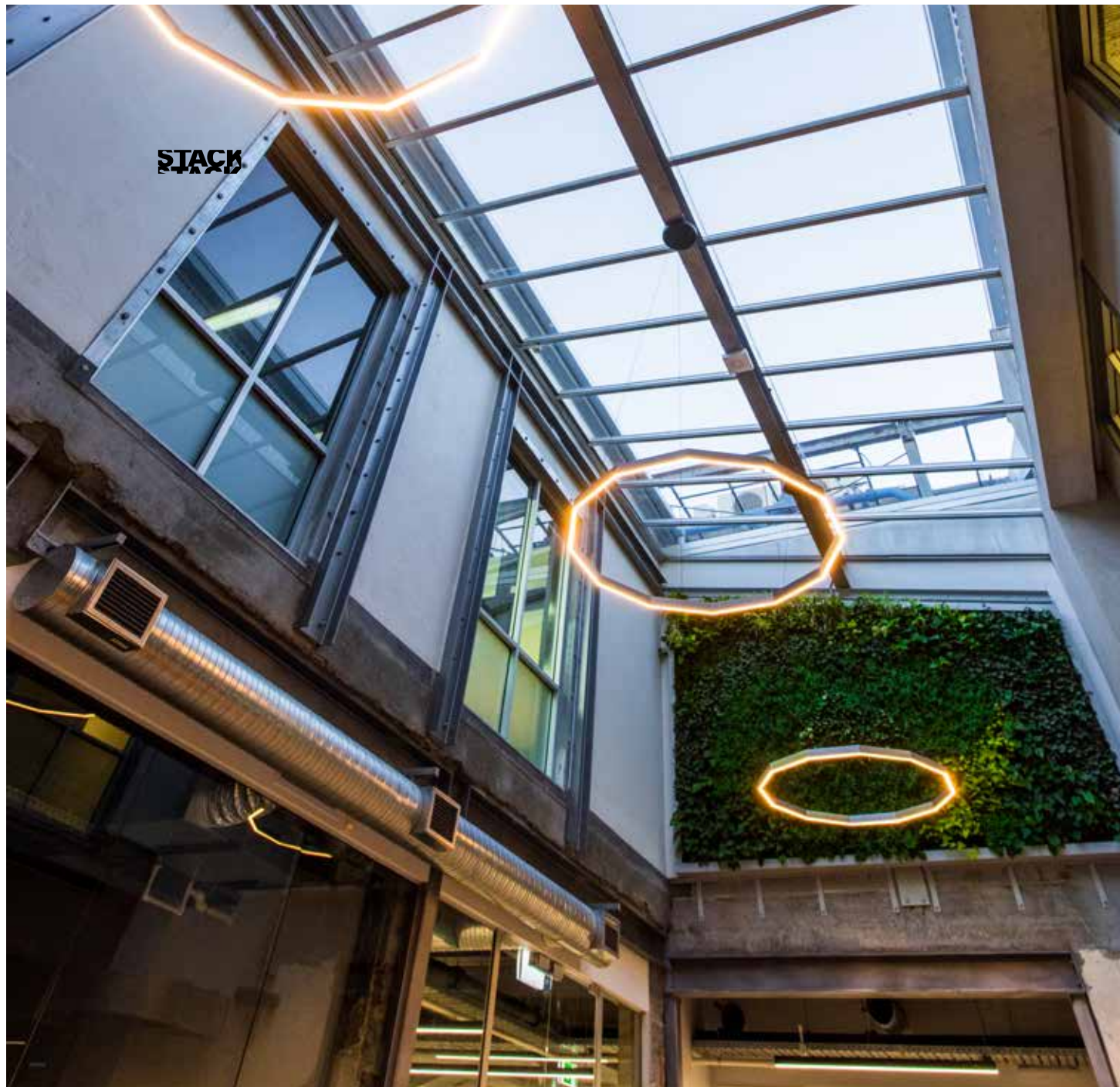
Case Study of:
Kiwi Bacon Building

At a glance

Size: 2,500m²

Services supplied

Design
Project Management



Mixing the old and new in an iconic Auckland Building

The Kiwi Bacon building is a well known landmark of Kingsland, Auckland. A historic factory, it previously housed conservative office space.

STACK worked with the landlords to redesign the tired interior creating five useable tenancies, three of which open into a shared double height internal atrium. They also upgraded the base build facilities and established a new central lobby, featuring a vibrant green wall.

Materials are a mix of old and new: cast concrete, exposed brick, rendered walls, exposed structural steel, polished concrete floors and exposed ceilings all work together to ensure the original character of the building is still evident.

STACK





STACK

