



A Walk in the Trees

David Morgan sheds light on his entry in this year's Timber Design Awards, a woody design for Rayonier Matariki Forests. Photos: Rebecca Swan and Karen Abplanalp.

A move to new workplace accommodation saw Rayonier take the opportunity to not only improve its working environment but also to provide a showcase for its products, both in its raw form and where possible as it appears in end products such as Hyjoist, Bestwood melamine and various species of timber veneer including macrocarpa, tawa, radiata pine, western red cedar, eucalyptus and New Zealand redwood.

With the forest as an obvious starting point, the concept for Rayonier's new workplace accommodation was developed, metaphorically, around the idea of a walk through the trees, with pathways and forest clearings providing the opportunity for meeting and workspaces.

The main 'forest clearing' or workspace is located in the centre of the level five office floor and serves as a screen and buffer between the central soft core utilities area and the main workspace located around the building perimeter.

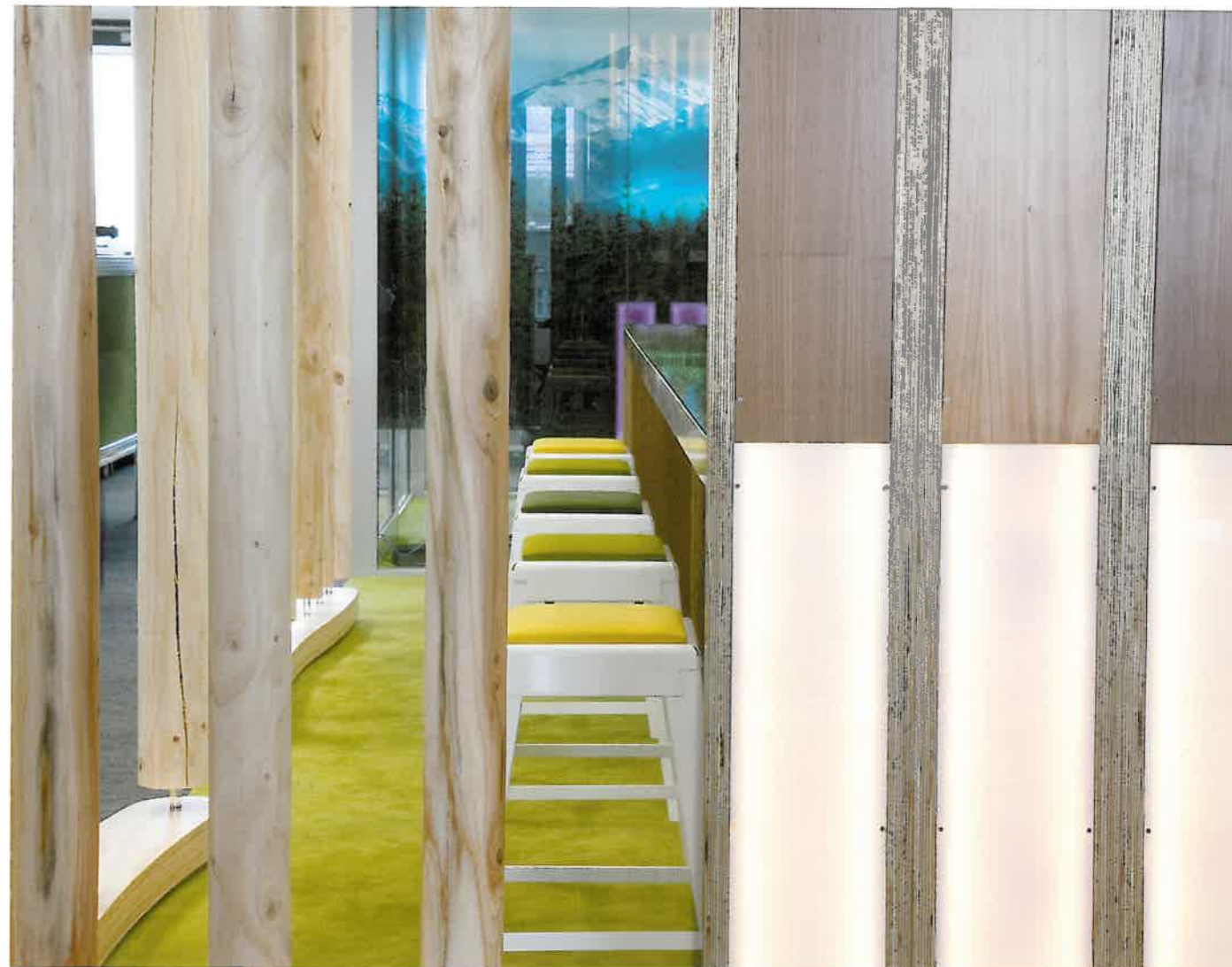
The tenancy is split over two floors and the tree-lined theme is apparent upon arrival at reception. The main entry wall and waiting area are wrapped in a curtain of stylised tree trunks.

These 'tree trunks' and the key circulation routes or 'forest paths' comprise a range of varying diameter radiata posts set on clear acrylic spigots so they appear to float between pine plywood base and head tracks.

The journey along the forest path continues around the central clearing on

level five and again when visitors are taken down to the level two presentation suite with the primary circulation route flanked on one side by the stylised tree trunks. This area in time, will serve as a story wall with objects and text inset between the trunks.

A key consideration for Rayonier was the appropriate incorporation of consumer products that are manufactured from the raw product. To this end, the company was enthusiastic that its product be showcased in inventively. This idea was brought to the forefront through the way products and materials have been combined, the leaners, for example, use Hyjoist as the main structural element, which forms the platform for a work surface with modules of veneered MDF or acrylic rebated into the Hyjoist.



A reception detail, opposite page, from Rayonier's new offices. The company wanted to highlight the use of both raw materials and end products, hence the use of radiata posts and a number of products reinterpreted in new ways.



The reception waiting area with varying diameter radiata posts set on clear acrylic spigots.

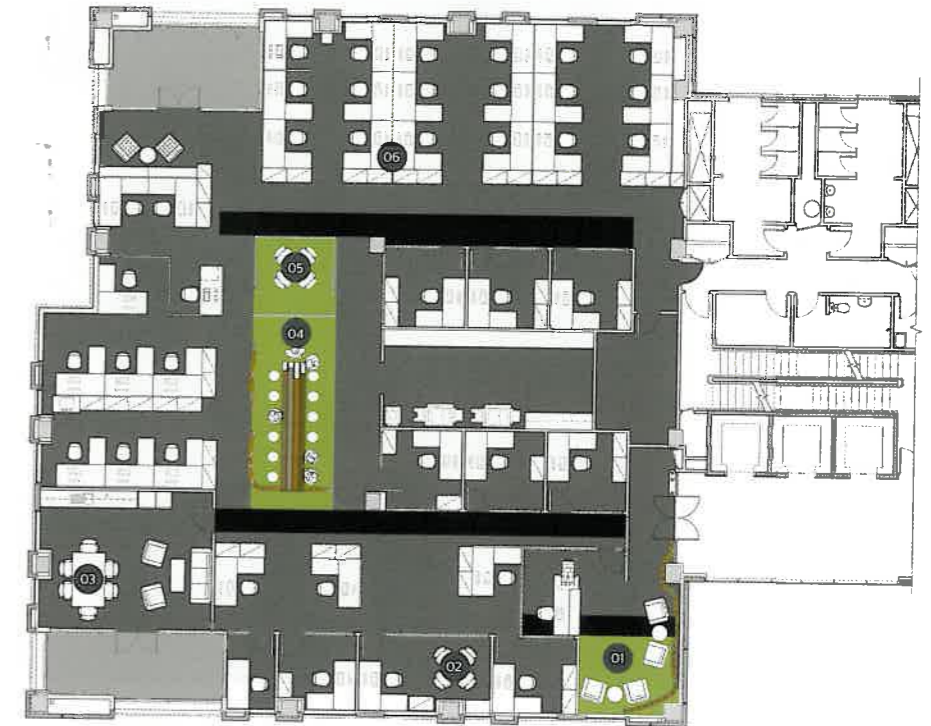


Floorplan

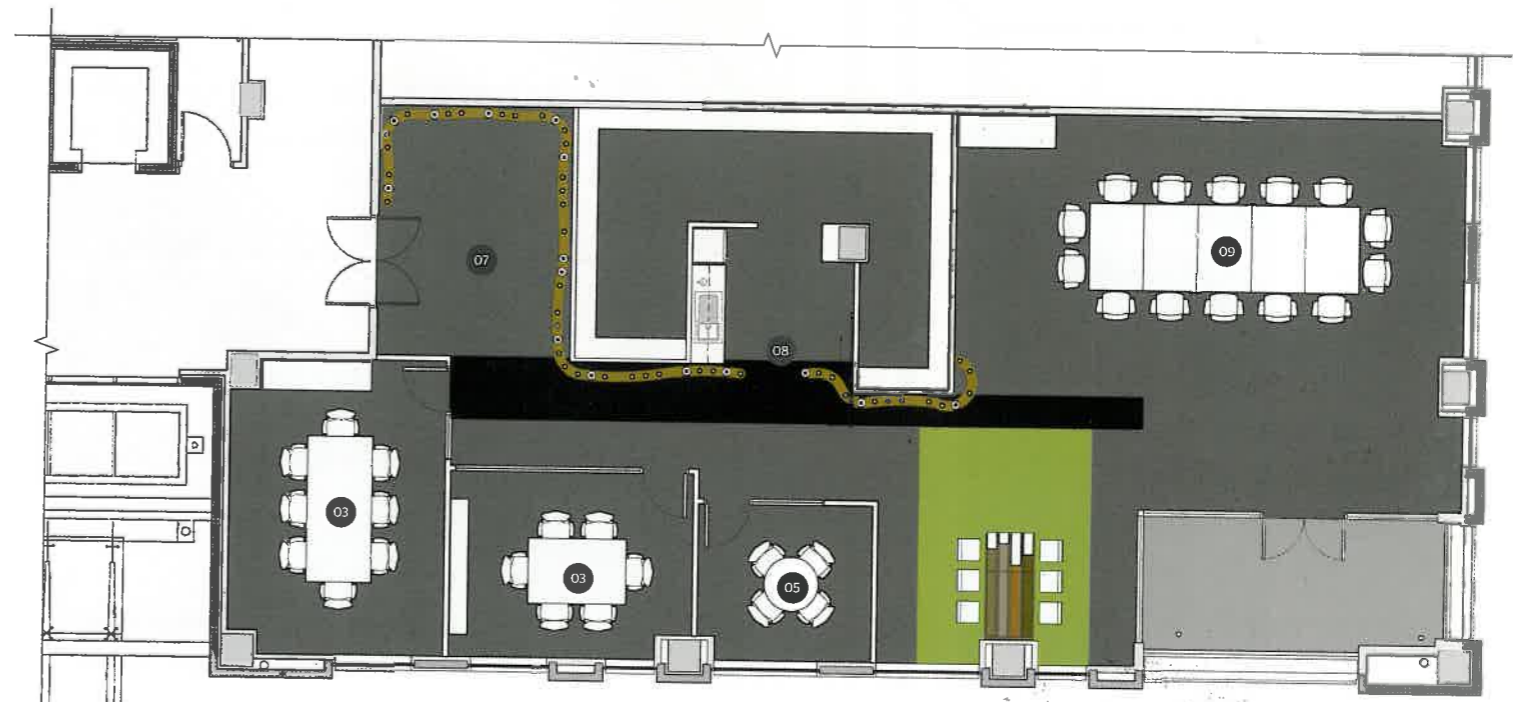
- 01 RECEPTION
- 02 EXECUTIVE OFFICE
- 03 MEETING SUITE
- 04 SHARED WORKSPACE
- 05 MEETING ROOM
- 06 WORK AREAS
- 07 LOBBY
- 08 KITCHEN
- 09 BOARDROOM

Selected Credits

- Architect** Stack Interiors Limited
- Client** Rayonier Matariki Forests
- Project Manager** Stack Interiors
- Fit-out contractor** Cape Interior Construction
- Joinery** Yourspace Developments
- Additional materials** Rayonier Matariki Forests:
Glenbervie Forest; Croft Poles Sawmill
- Paint** Resene
- Flooring** Interface
- Lighting** Forman Group
- Furniture** Ecclectic Furniture; Simon James Design;
Backhouse Interiors
- Textiles** Vivid
- Graphics** Rayonier/ Stack Interiors Limited
- Signage** Think tank



Level 5, workspace



Level 2, presentation suite