



STACK

WORKPLACE DESIGN BRILLIANCE

Case Study of:

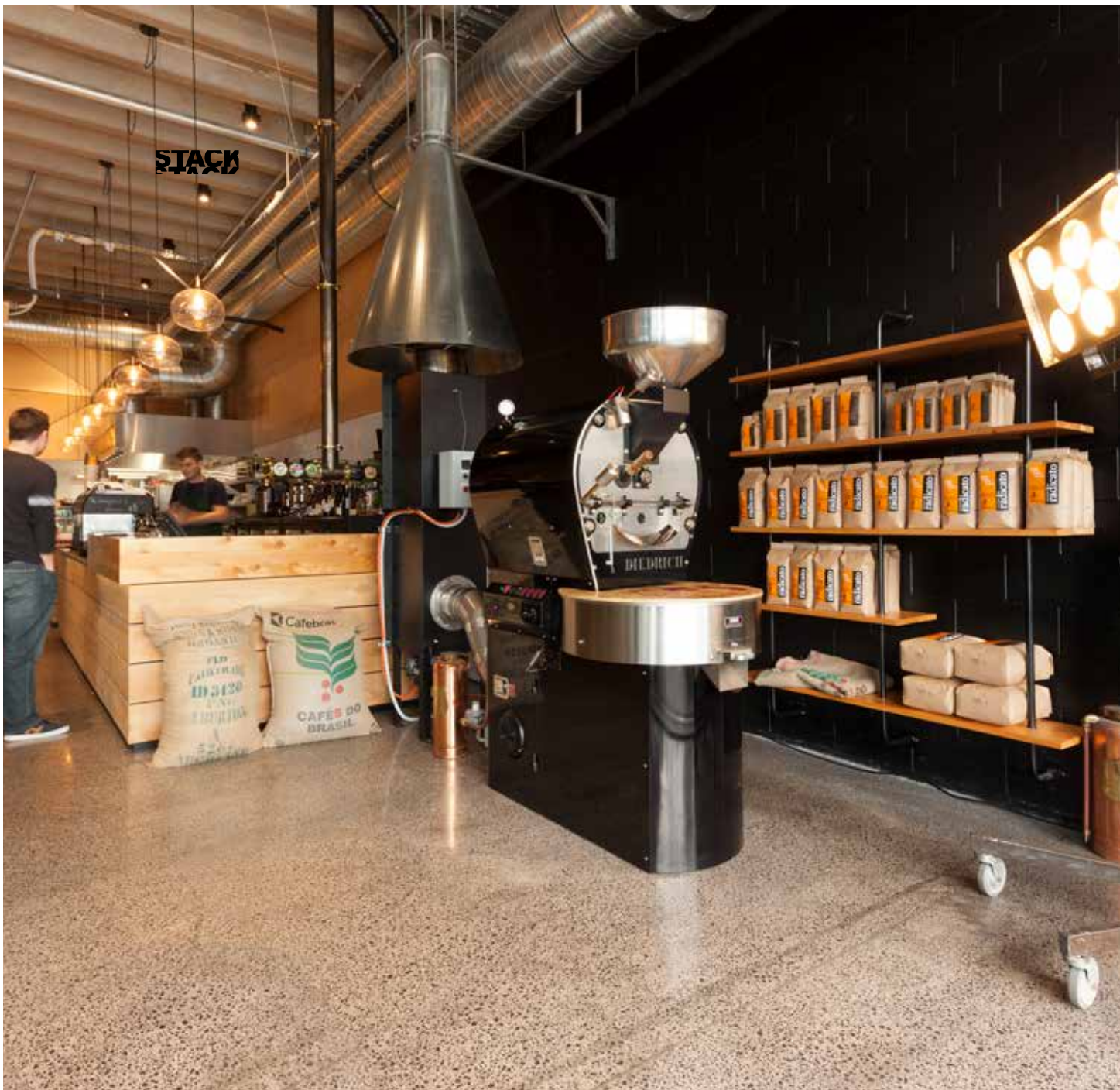
Giusto

At a glance

Size: 250m² Cafe

Services supplied

Design Services
Project Management



Industrial edge to Sales St bar and eatery

The basement level of 68 Sale St is the new home for the Stack designed Giusto Bar Eatery. This addition to Auckland's flourishing cafe scene with its industrial look of exposed ceilings, polished cement floors, and glass pendant lighting, alongside a great menu and stupendous service has fast become a popular destination for the local office community. It is part of a new trend that Stack has seen over the past year or so with cafe and restaurant spaces becoming the hub of social interaction and fits in well with an office environment, says Stack project manager Daryl Howarth.

"They're no longer a space to simply sit down and eat. They're a quiet space to work on a laptop; a place to meet colleagues; or a space that's intended to be enjoyed as you linger over your lunch,"

STACK





STACK

